

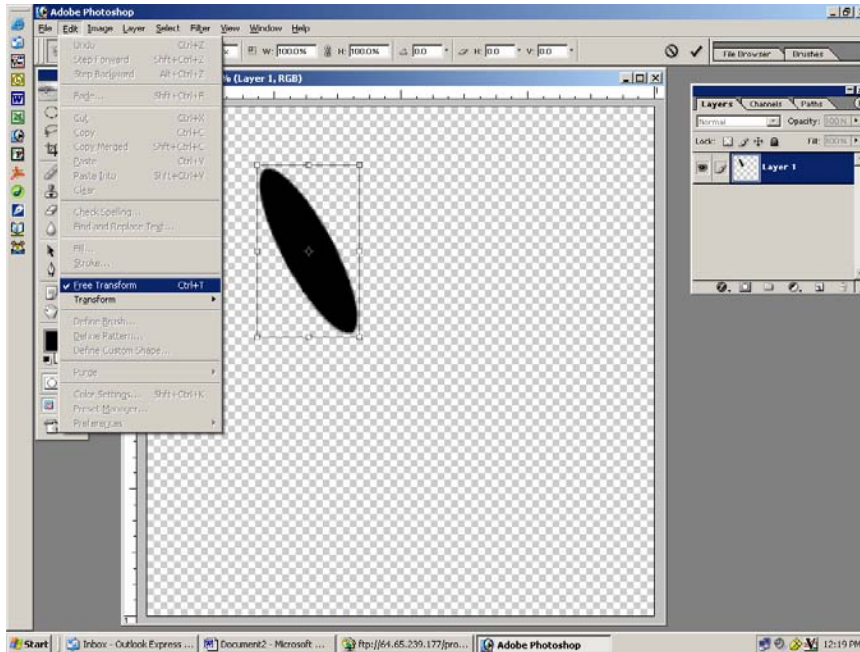
## CREATING AND USING CUSTOM BRUSHES – PHOTOSHOP TUTORIAL

By Kim Hill

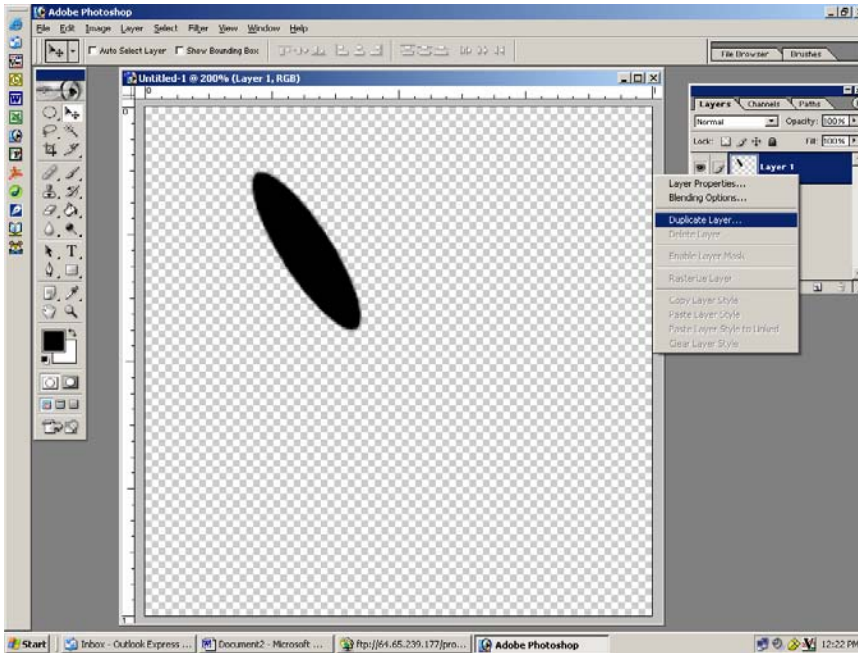
If you have any questions about this tutorial, please contact me at [kim@cgsentials.com](mailto:kim@cgsentials.com)

Anything can be used to make a brush. You can use a photo or even make your own image and turn it into a brush. For this tutorial, we will be making our own brush from scratch.

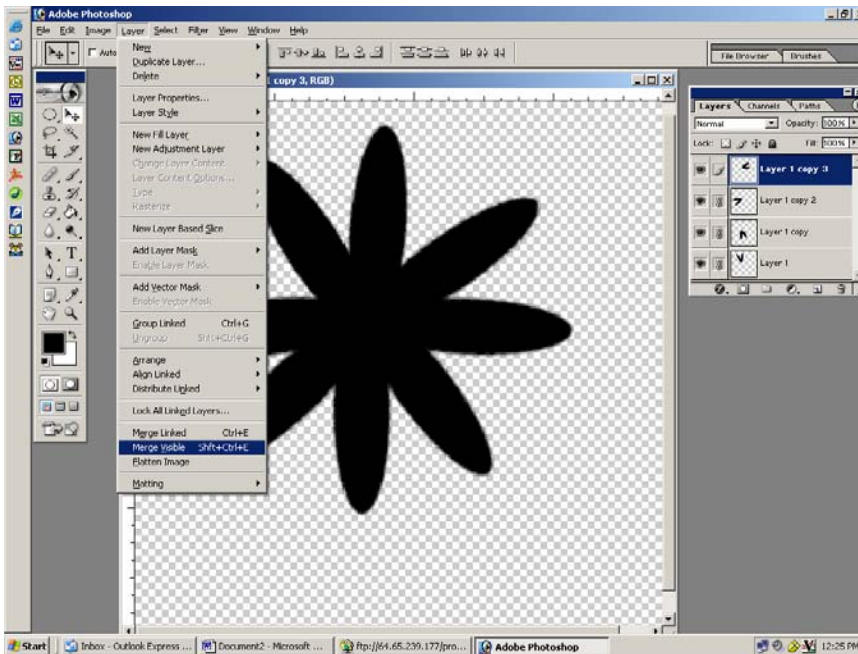
1. Start by opening a new document that is 100 pixels square (1 inch square). You can make it bigger if you want, but it's better to make small brushes because they are crisper and make for easier painting.
2. Now that you have your new document open, you will need to make some sort of image that you want your brush to look like. Let's make a flower since that is pretty simple. Grab your circle marquee tool from the tool palette (it is next to the arrow tool).
3. Draw an ellipse and fill it with color using your paint bucket tool. Now you will want to turn your ellipse to form petals. To do this, click on Edit/Free Transform. A box will form around your ellipse. You can then use your mouse to rotate the ellipse a little bit. When you get it where you want it, click on the arrow tool. A window will pop up asking you to apply the transformation. Click Apply.



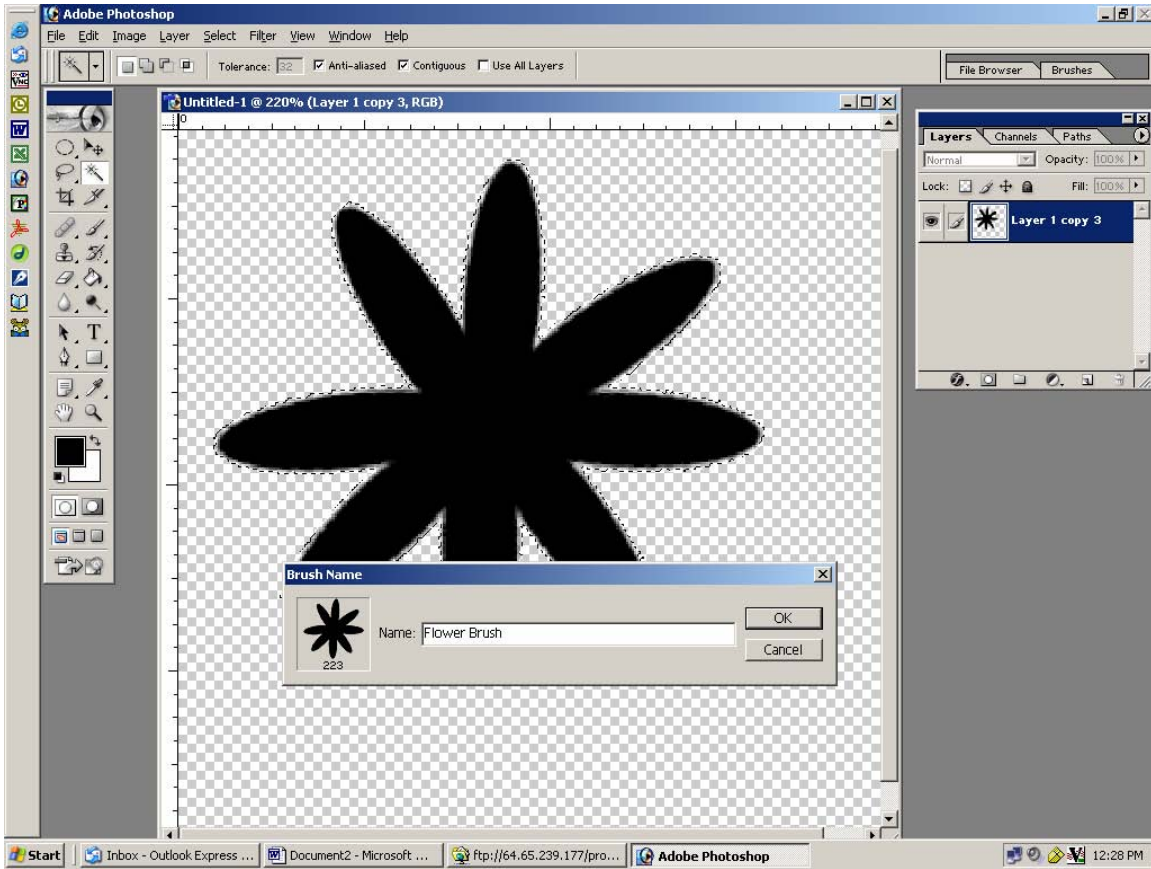
4. Now you need to duplicate this layer to make another new petal. You can do this a few different ways. One way, is to right click on the layer in your layers palette. And then click "duplicate layer".



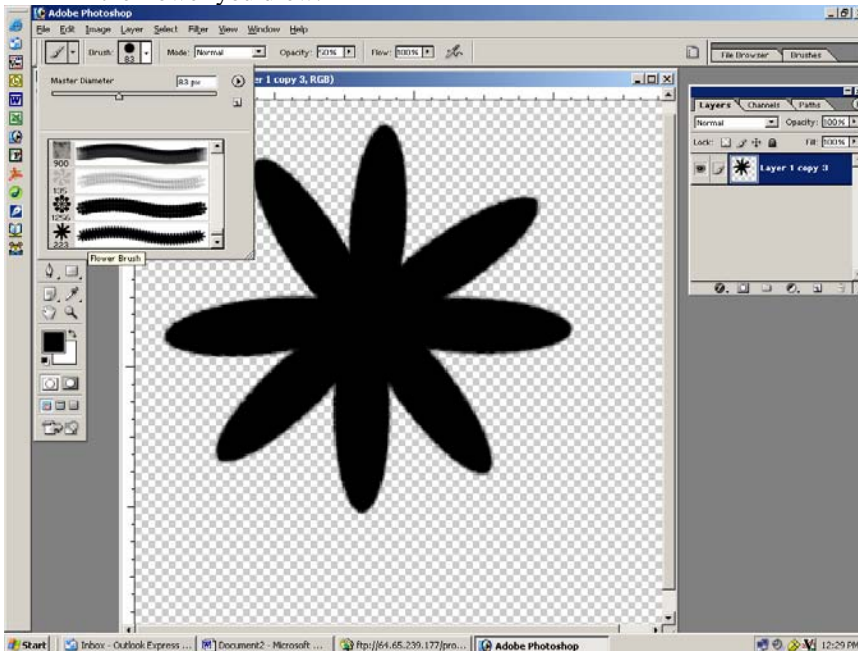
5. Your new layer will be directly on top of the first layer. Use your arrow tool to move it over. Then rotate it by repeating step 3 (edit/free transform).
6. Continue to duplicate and rotate the petals to make it look like a flower. Then merge all the layers together by clicking on Layer/merge/merge visible.



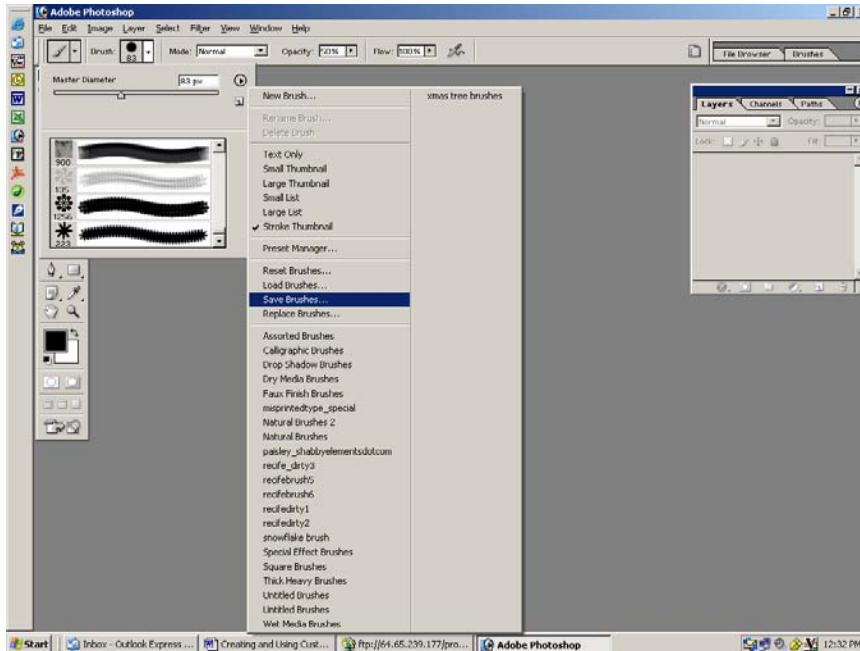
7. You now have a flower shape that you can use to create your brush. To create the actual brush, use your magic wand (in the tool palette below your arrow tool) to select the flower. Click on Edit/Define Brush. A new window will open asking you to name your brush. After you've given it a name, click OK.



8. Now you will find this brush in your brush palette at the very bottom. To select this brush, click on your paintbrush (in the tool palette below the magic wand). Now go to the options bar (at the top of your screen) and open the brush palette by clicking on the small arrow next to the brush icon. Scroll to the bottom of the brush list and click on the flower brush you just made. Close out the flower you drew.



9. If you want this brush to stay in your palette for future use, you will need to save the brush by clicking on the little arrow within the brush palette and click Save Brush. Give your brush set a name. I call mine “favorite brushes”. This will save all the brushes currently in your brush palette as one file.



10. To use your brush, first you need to open a new document (any size you want). Fill the document with a background color of choice using your paint bucket. Then, select your paint brush from the tool palette. Select a paint color of choice. You can alter the size of your brush by sliding the master diameter bar at the top of the brush palette. Now try out your brush.
11. You can alter the opacity of your brush by clicking on the slide bar for opacity in the options bar at the top of your screen. Play around with it until the brush opacity is to your liking.

